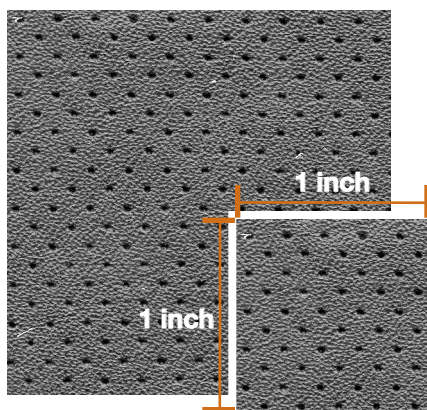


Perforation adds a distinct look and interesting detail to leathers for various applications. Most of the Townsend Leather product line can be Perforated. Perforation pattern options are pictured on this tool sheet.

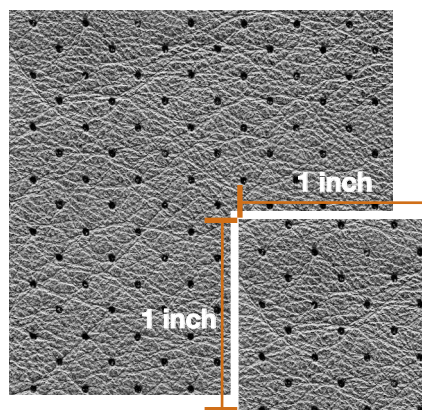
Please keep in mind that Perforated leathers are produced as half hides (sides) only and run 25 – 30 SF on average. Estimated lead time for Perforation is 2 to 3 weeks.

Please note: this is a basic reference tool only; each lot and type of leather may be subject to slight variation, Townsend recommends you confirm exact specifications with each order.

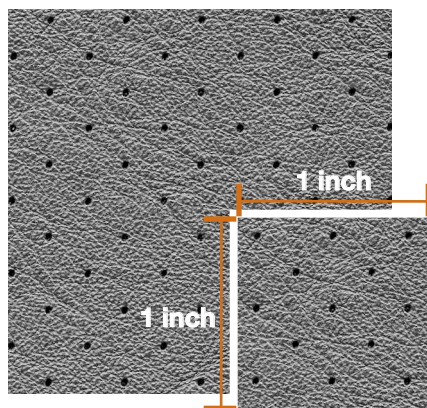
Contact Townsend Leather Customer Service for more information on Perforation.



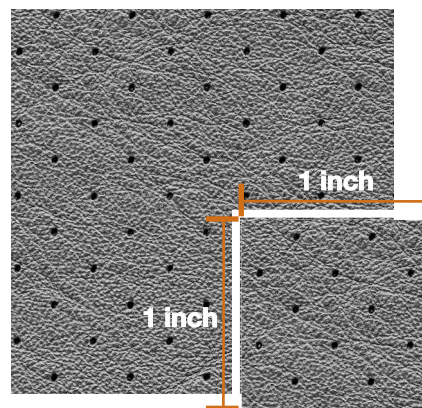
Pattern Name:  
**914 Mini**  
Hole Size:  
0.051 inch wide  
(1.295 mm wide)  
Pattern Direction:  
**Diagonal**  
50 holes per square inch



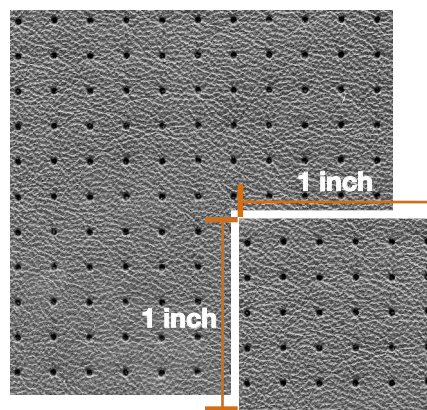
Pattern Name:  
**457 Hampton**  
Hole Size:  
0.051 inch wide  
(1.295 mm wide)  
Pattern Direction:  
**Diagonal**  
24 holes per square inch



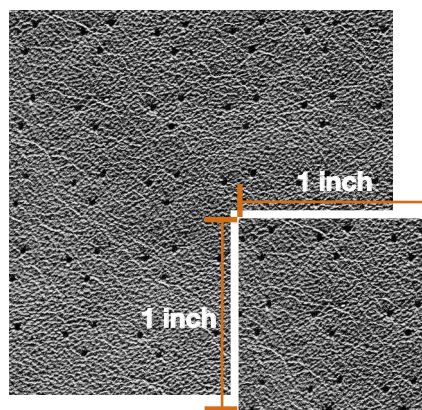
Pattern Name:  
**330 Highland**  
Hole Size:  
0.051 inch wide  
(1.295 mm wide)  
Pattern Direction:  
**Diagonal**  
13 holes per square inch



Pattern Name:  
**265 Porsche**  
Hole Size:  
0.051 inch wide  
(1.295 mm wide)  
Pattern Direction:  
**Diagonal**  
12 holes per square inch



Pattern Name:  
**1875 Straight**  
Hole Size:  
0.051 inch wide  
(1.295 mm wide)  
Pattern Direction:  
**Straight**  
30 holes per square inch



Pattern Name:  
**Tri-Star**  
Hole Size:  
0.047 inch wide  
(1.194 mm wide)  
Pattern Direction:  
**Directional Diagonal**  
27 holes per square inch