

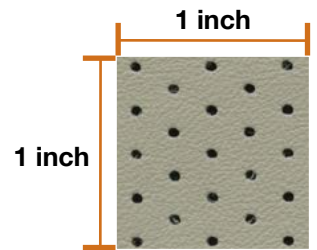
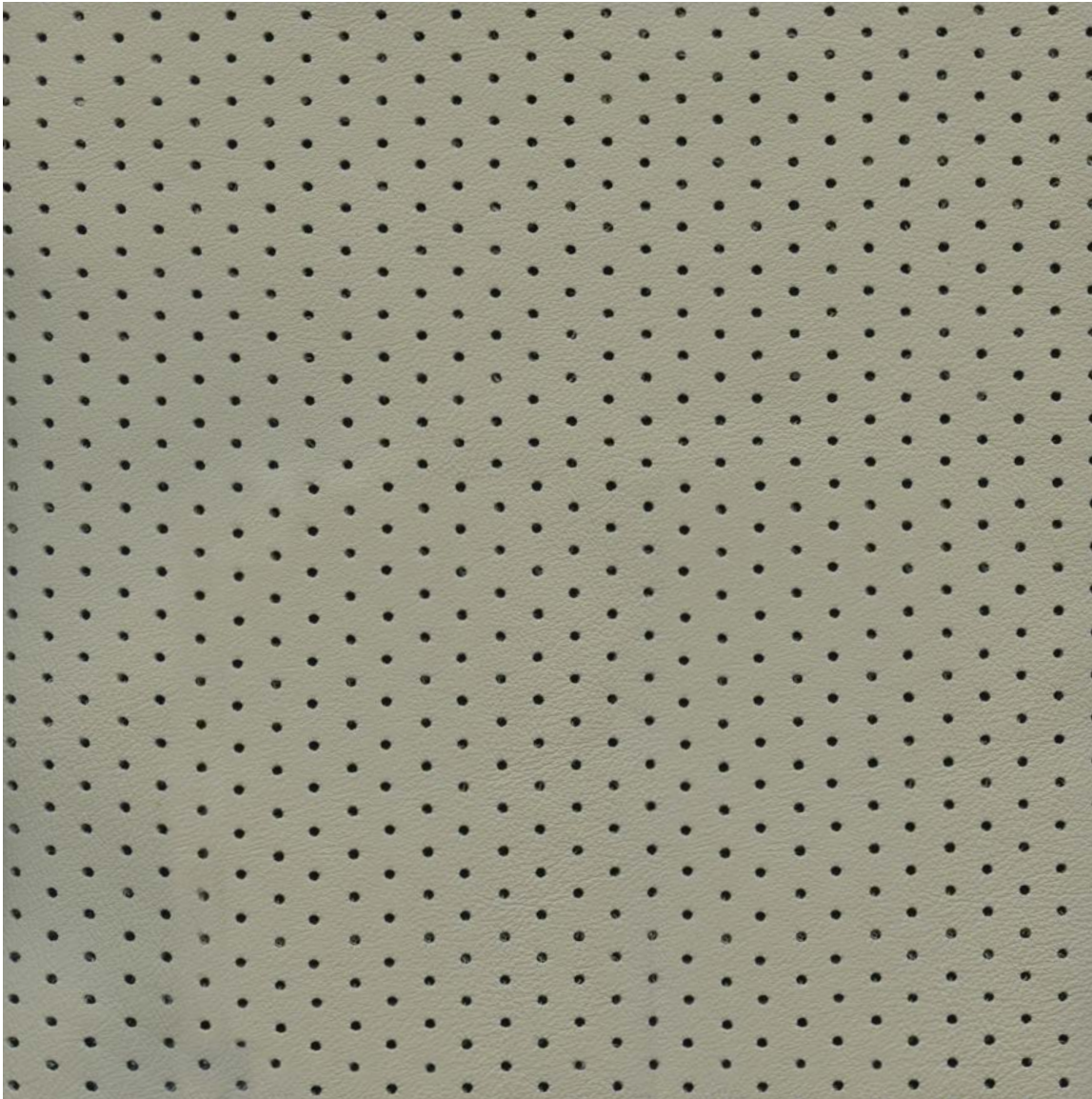
Perforation adds a distinct look and interesting detail to leathers for various applications. Most of the Townsend Leather product line can be Perforated. Perforation pattern options are pictured on this tool sheet.

Please keep in mind that Perforated leathers are produced as half hides (sides) only and run 25 – 30 SF on average. Estimated lead time for Perforation is 2 to 3 weeks.

Please note: this is a basic reference tool only; each lot and type of leather may be subject to slight variation, Townsend recommends you confirm exact specifications with each order.

Contact Townsend Leather Customer Service for more information on Perforation.

## Pattern Name: **560-85 Directional**



Hole Size:  
**0.0625 inch wide**  
**(1.588 mm wide)**

Pattern Direction:  
**Diagonal**

23 holes per square inch