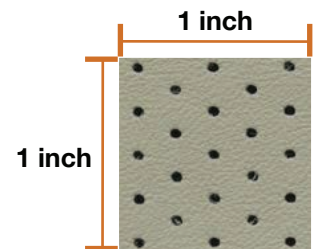
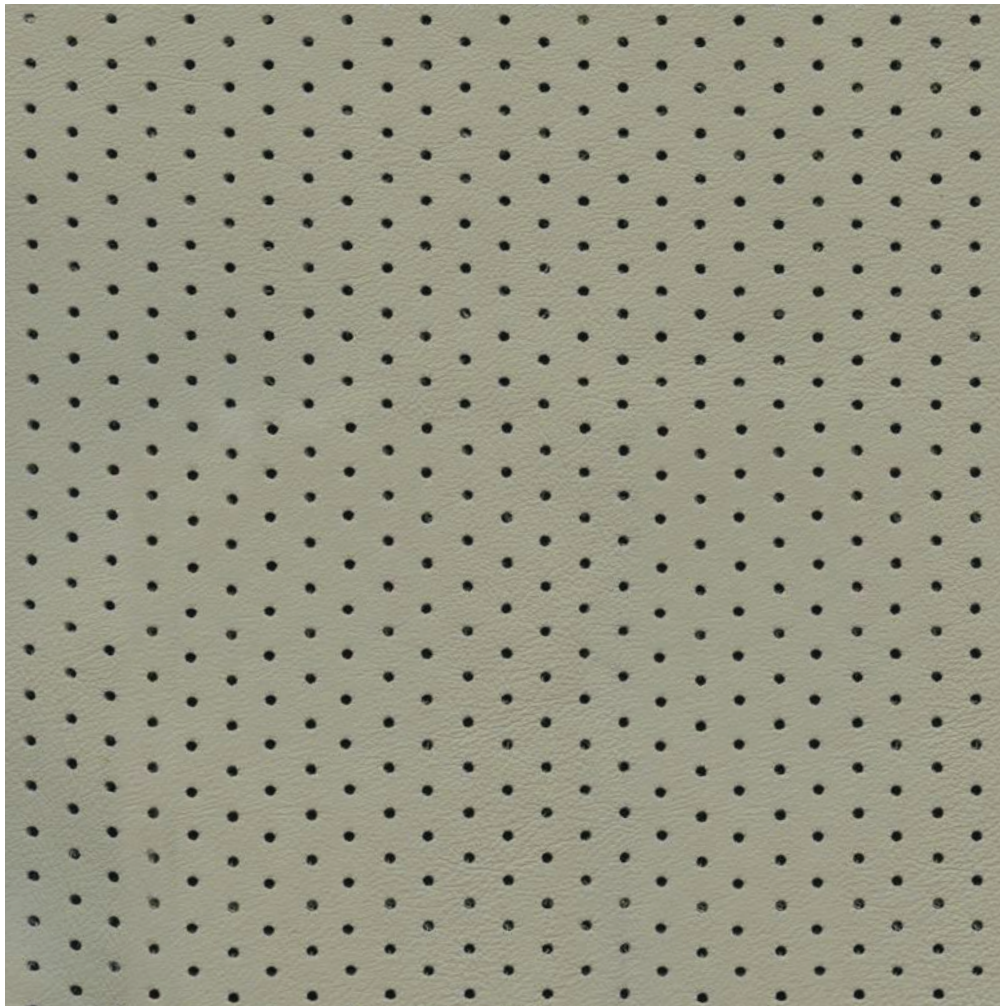


STANDARD PERFORATION OPTION

Perforation adds a distinct look and interesting detail to leathers for various applications. Most of the Townsend Leather product line can be perforated.

Pretty Perforation patterns are also available.

Pattern Name: **560-85 Directional**



Hole Size:
0.0625 inch wide
(1.588 mm wide)

Pattern Direction:
Diagonal

23 holes per square inch

INFORMATION

Hide Sizing: Half hides (sides only)

Average Square Feet: 25-30 SF

Estimated Lead Time: 2-3 weeks

Leather: Perforations can be applied to most Townsend Leather product lines.

Please note: This is a basic reference tool only; each lot and type of leather may be subject to slight variation. Townsend recommends you confirm exact specifications with each order.

Contact Townsend Leather Customer Service for more information on Perforations.